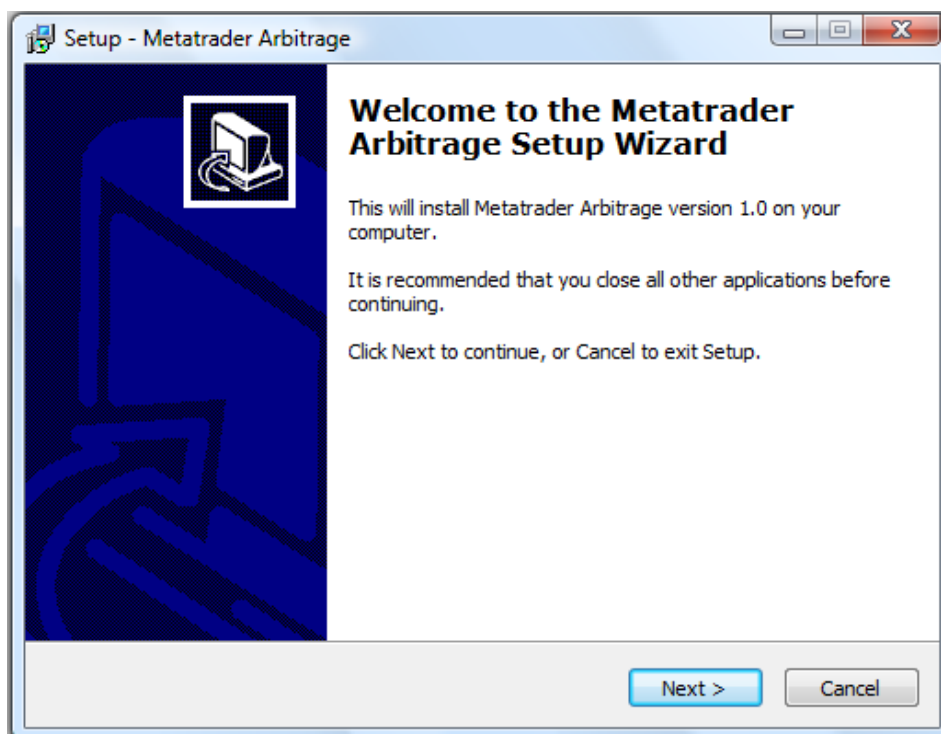
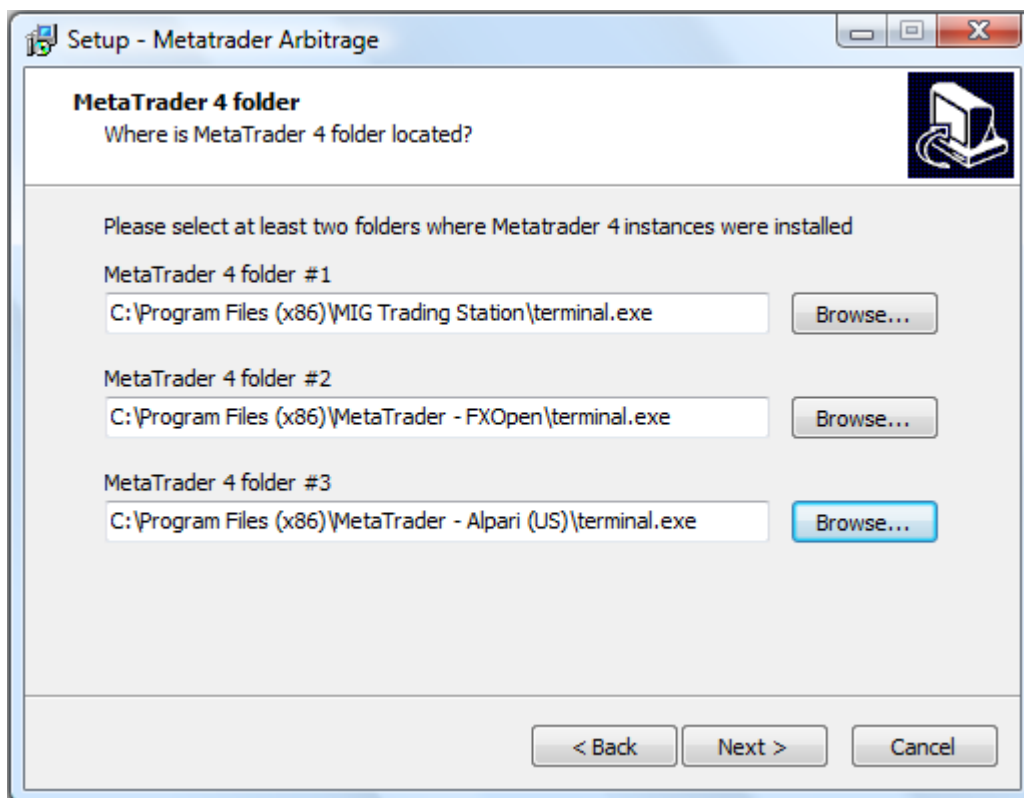


# FOREX ARBITRAGE SOFTWARE INSTALLATION

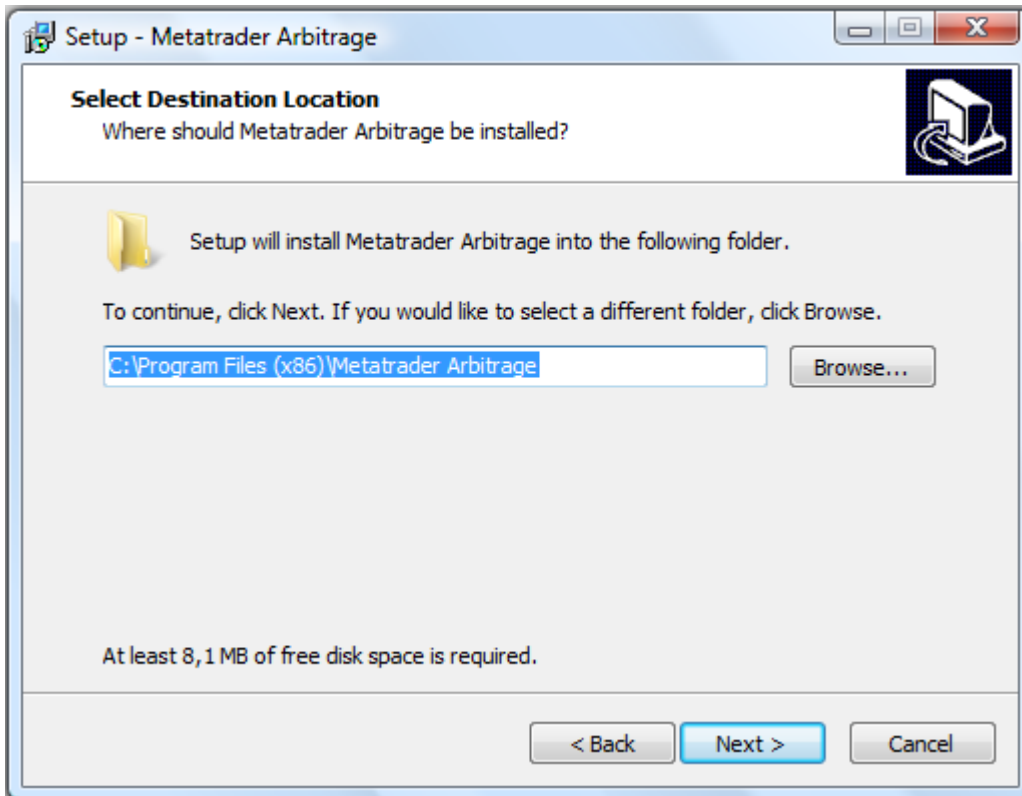
1. Run Installer (setup.exe file). Press 'Next>' button



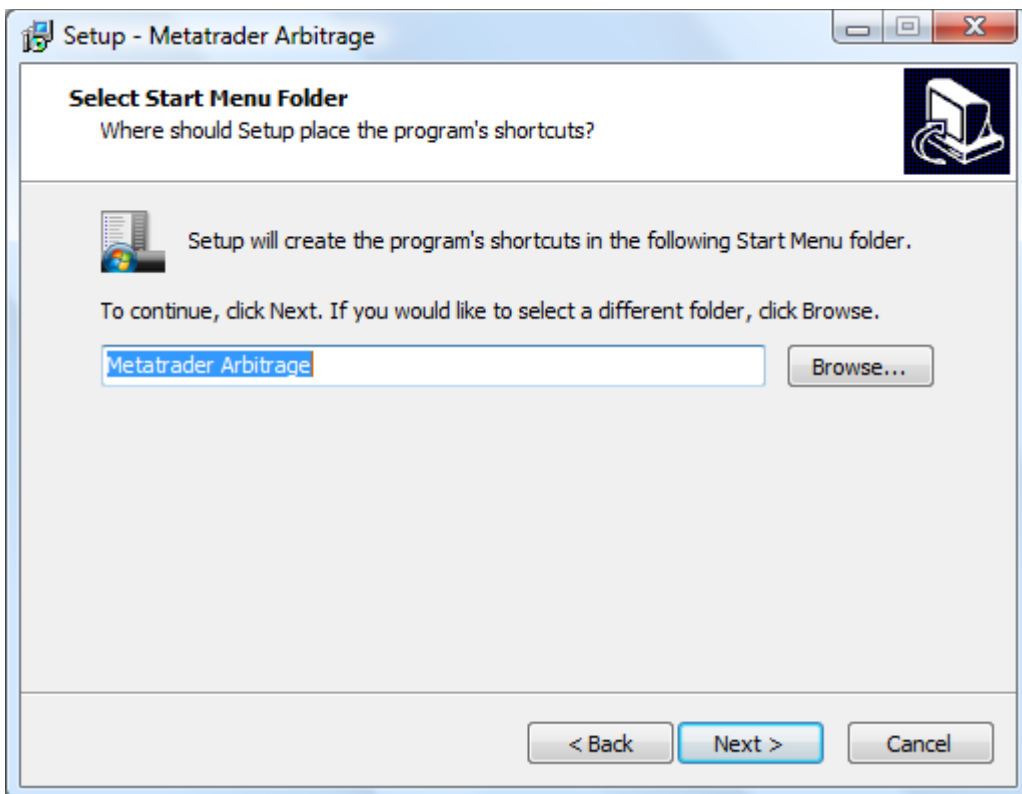
2. Select folders where Metatrader 4 terminals were installed. You can select 2 or 3 Metatraders
3. Press 'Next >' button



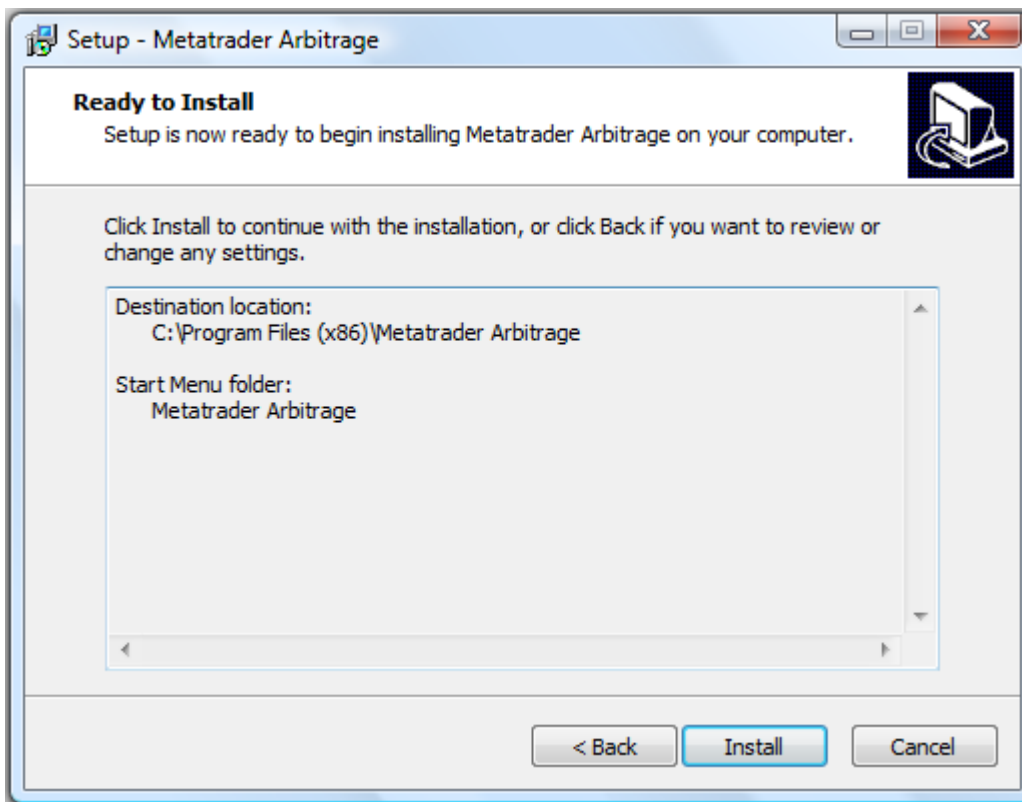
4. Select destination folder for Arbitrage Software and press 'Next >' button



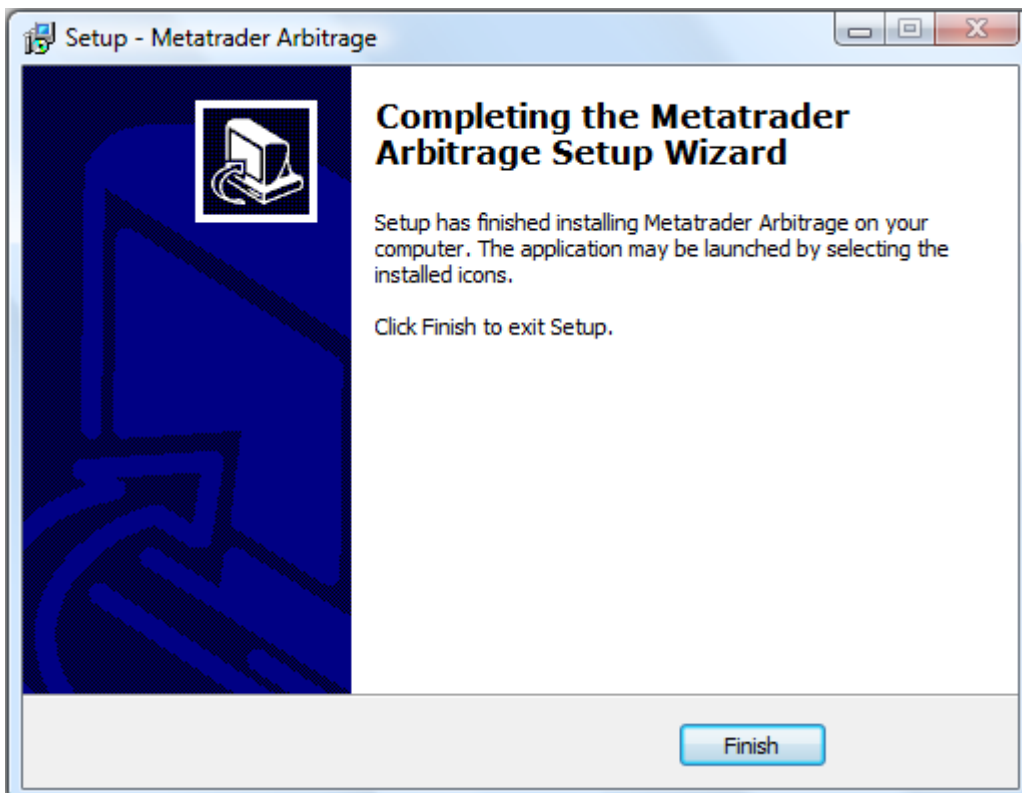
5. Select Start Menu folder for Forex Arbitrage software



6. Review destinations and press 'Install'. Installation process should start.

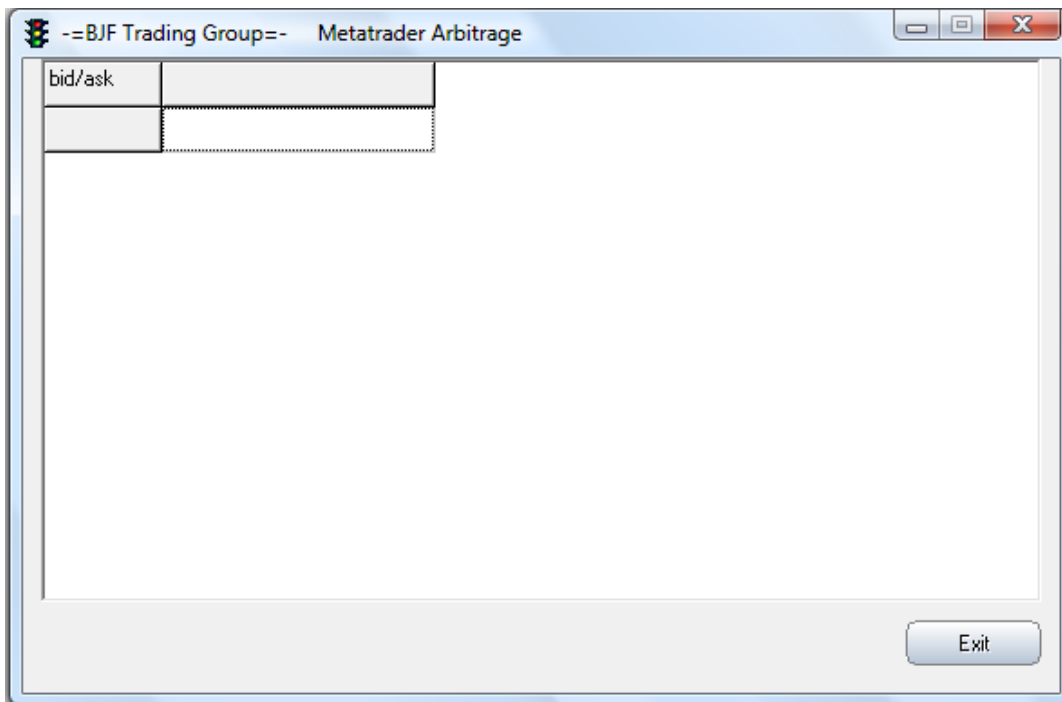


7. After installation, following window should appear. Press 'Finish' button

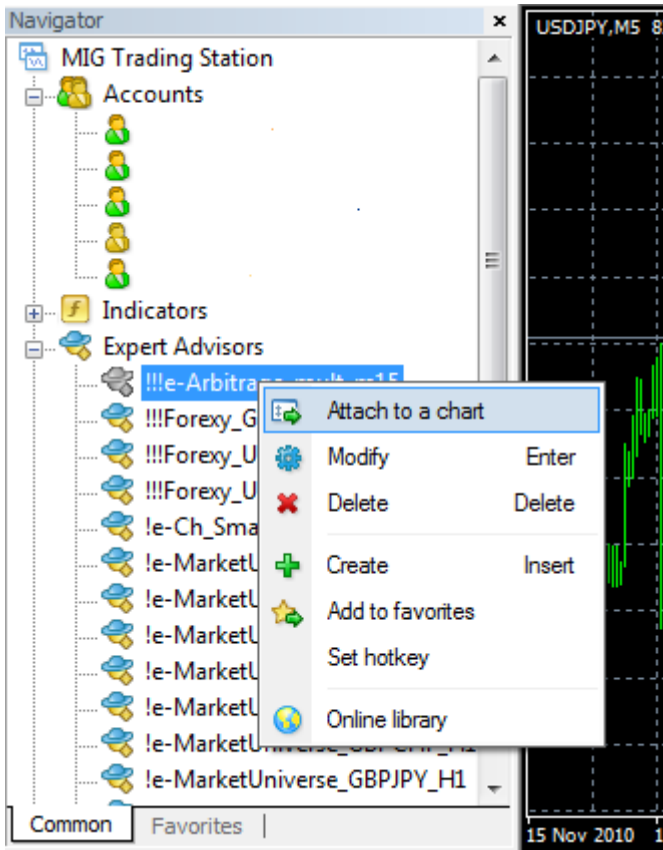


# FOREX ARBITRAGE SOFTWARE USAGE

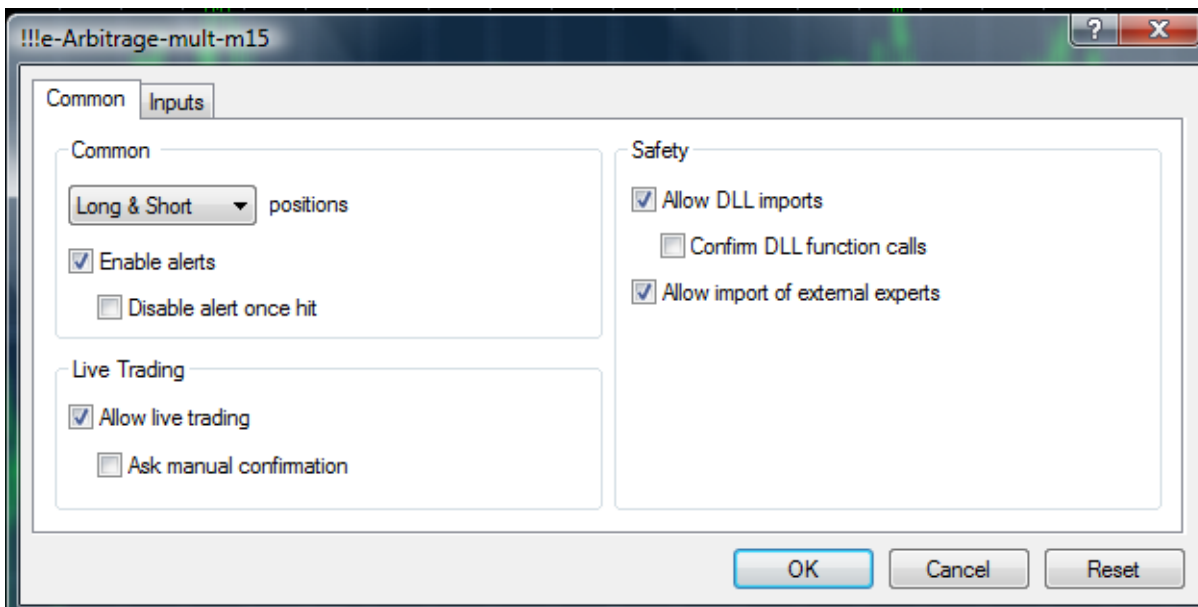
1. Press windows Start button, select all programs, metatrader arbitrage and run Metatrader Arbitrage software. Following window should appear



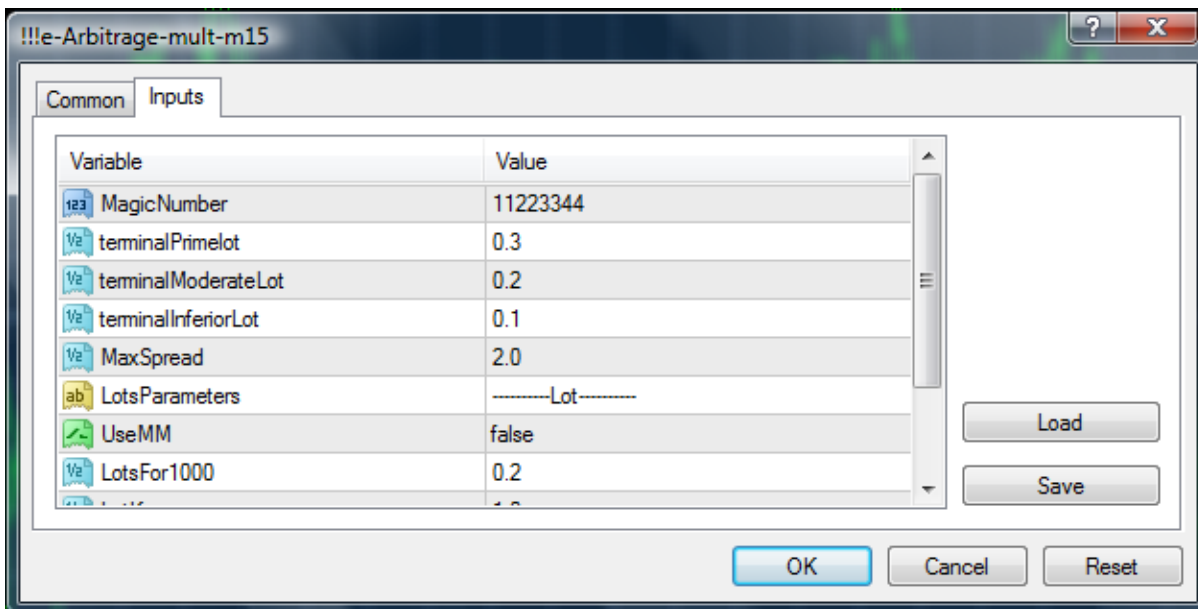
2. Open Metatrader terminals (2 or 3).
3. Open charts, currencies: EURCAD, CADCHF, USDCHF, USDJPY, GBPCAD. Timeframe: M15
4. Add Expert advisor for each chart for each Metatrader.



- Expert Advisor's setting window should appear. Click 'Common' tab and check 'Allow live trading', 'Allow DLL imports', 'Allow import of external experts'



- Click 'inputs' tab and set lot size  
 TerminalPrimelot=3; - terminal with the highest priority  
 TerminalModerateLot=2; - terminal with average priority  
 TerminalInferiorLot=1; - terminal with the lowest priority



### Example of work.

The advisor gave a signal for buying EURUSD; at that moment the price of broker A was 1.4189, the price of broker B was 1.4183, the price of broker C was 1.4181. The priority table will be formed in the following way:

Prime broker - broker C (price: 1.4181)

Moderate broker – broker B (price: 1.4183)

Inferior broker – broker A (price: 1.4189)

Let us assume that we set lot size in the following way:

terminalPrimelot=3

terminalModerateLot=2

terminalInferiorLot=0.5;

In this case the system will open order on terminal C with lot size =3, on terminal B with lot size =2, on terminal A with lot size =0.5.

### Customer support:

Tel: 1.347.329.4439 | Email: support@iticsoftware.com | skype: iticsoftware

### Risk Warning

Before deciding to participate in the Forex market, you should carefully consider your investment objectives, level of experience and risk appetite. Most importantly, do not invest money you cannot afford to lose. There is considerable exposure to risk in any off-exchange foreign exchange transaction, including, but not limited to, leverage, creditworthiness, limited regulatory protection and market volatility that may substantially affect the price, or liquidity of a currency or currency pair.